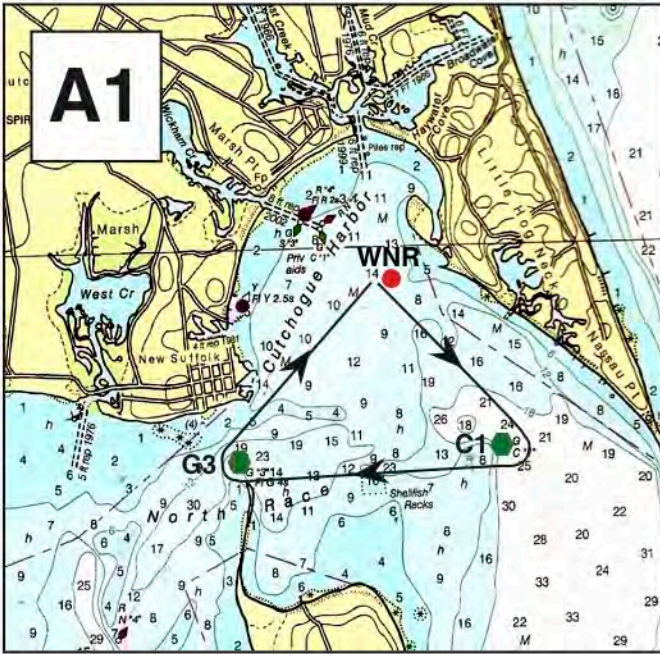
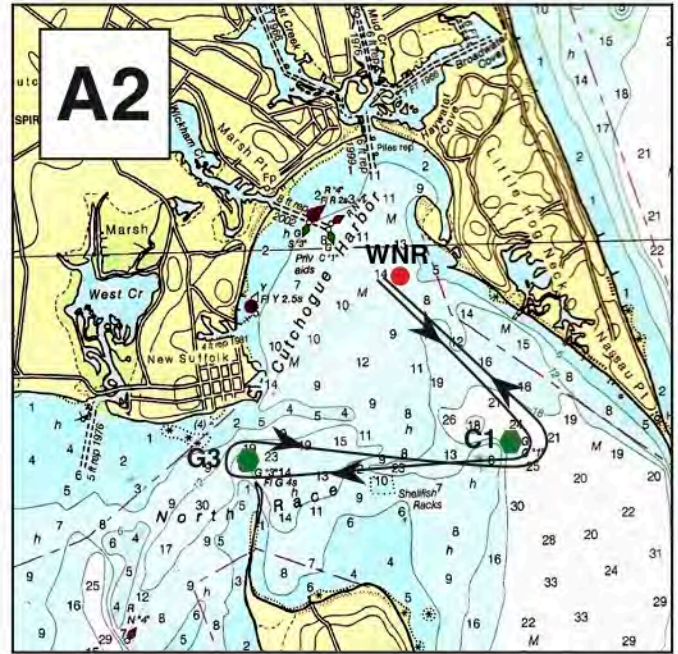


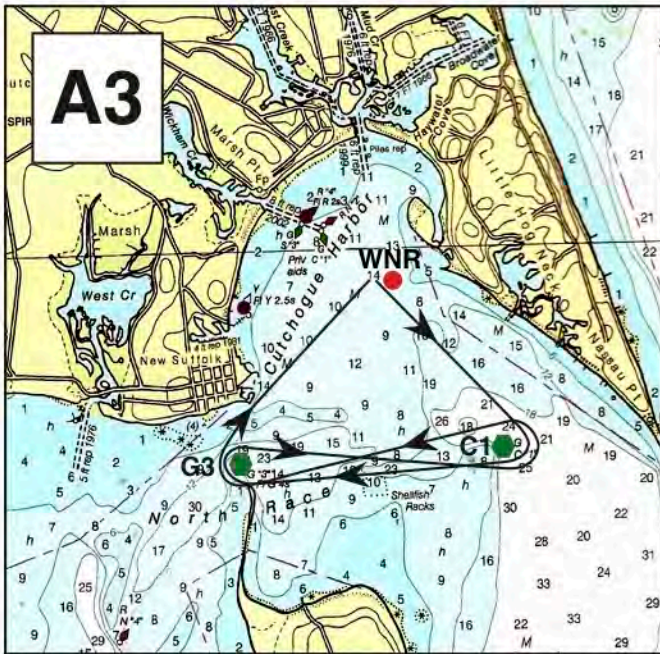
PECONIC BAY SAILING ASSOCIATION
RACE-COURSES — A1, A2, A3 & A4
 PLEASE MONITOR VHF #71 — DO NOT USE FOR NAVIGATION



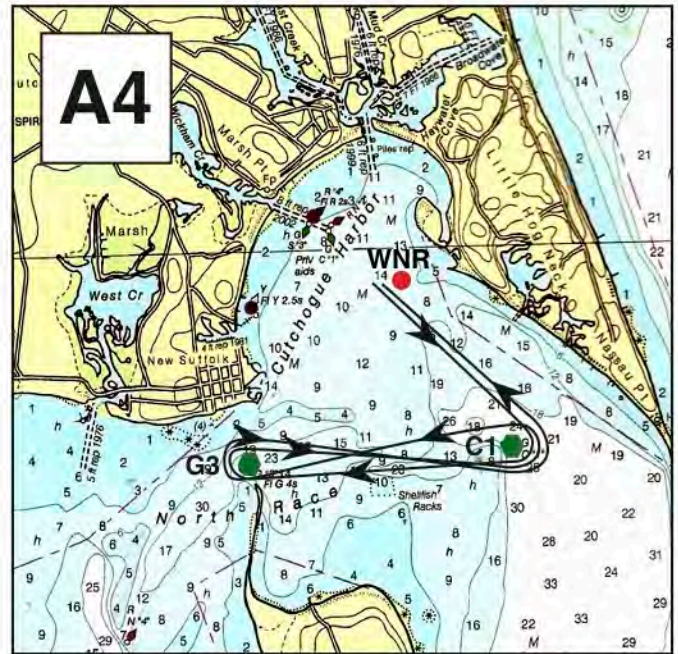
A1. START AT WNR, C1-S, G3-S,
FINISH WNR — 2.77 NM



A2. START AT WNR, C1-S, G3-S,
C1-P, FINISH WNR — 3.76 NM



A3. START AT WNR, C1-S, G3-S, C1-
P, G3-S, FINISH WNR — 4.83 NM

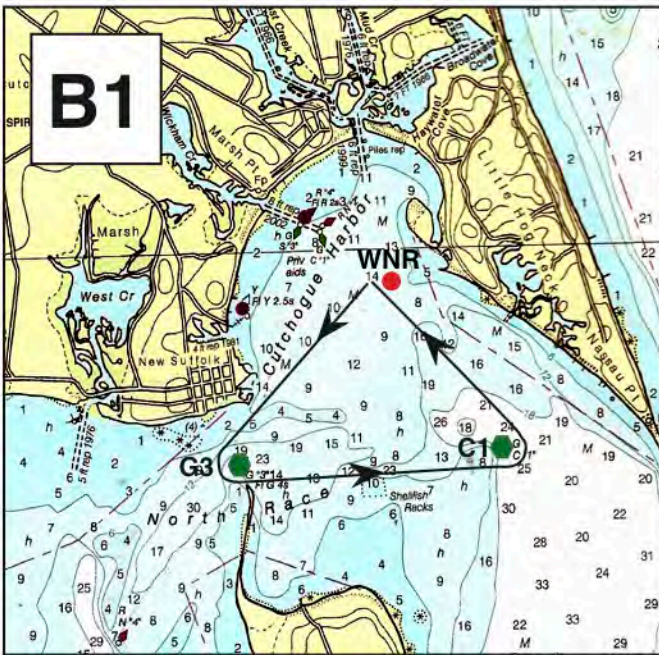


A4. START AT WNR, C1-S, G3-S, C1-P,
G3-S, C1-P, FINISH WNR — 5.82 NM

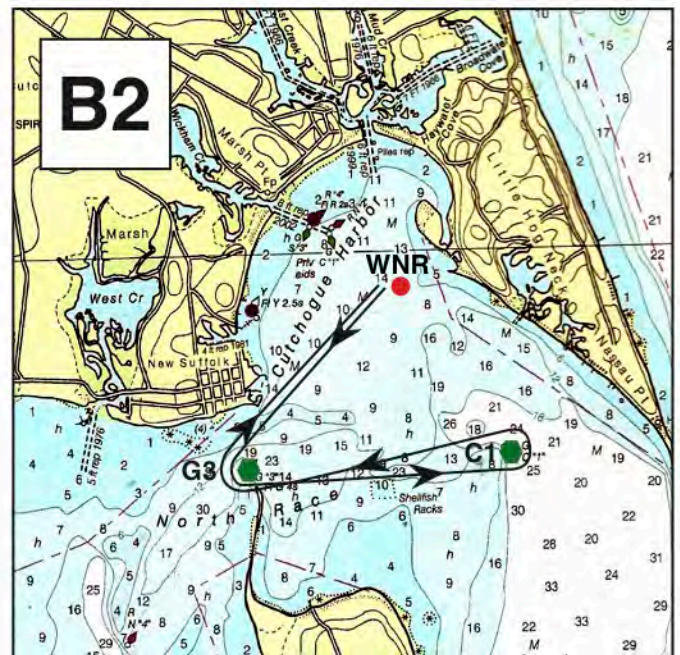
Short courses for light wind (esp. East-West); starts to the SE and SW.

PECONIC BAY SAILING ASSOCIATION RACE-COURSES – B1, A2, B3 & B4

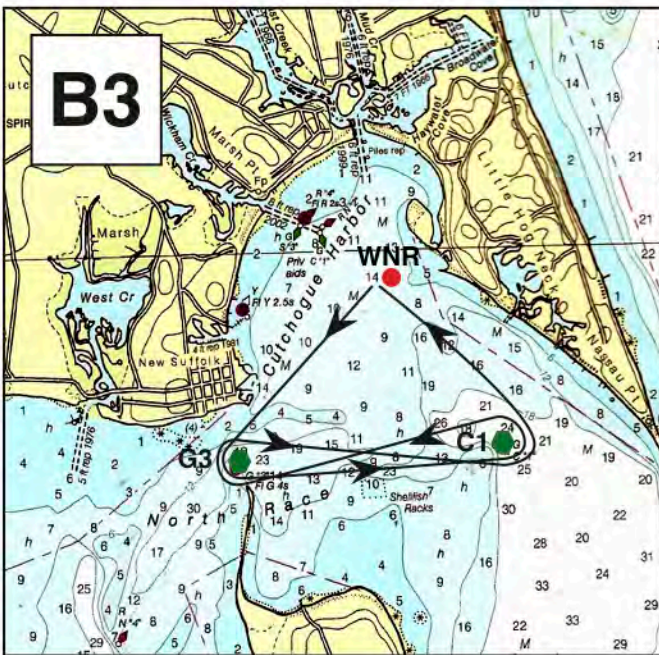
PLEASE MONITOR VHF #71 – DO NOT USE FOR NAVIGATION



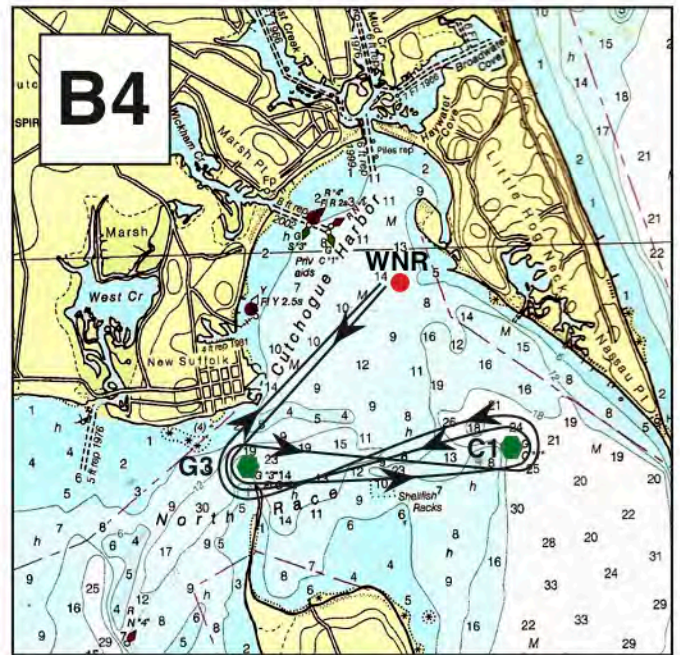
B1. START AT WNR, G3-P, C1-P,
FINISH WNR – 2.77 NM



B2. START AT WNR, G3-P, C1-P, G3-S,
FINISH WNR – 3.84 NM



B3. START AT WNR, G3-P, C1-P, G3-S,
C1-P, FINISH WNR – 4.83 NM NM

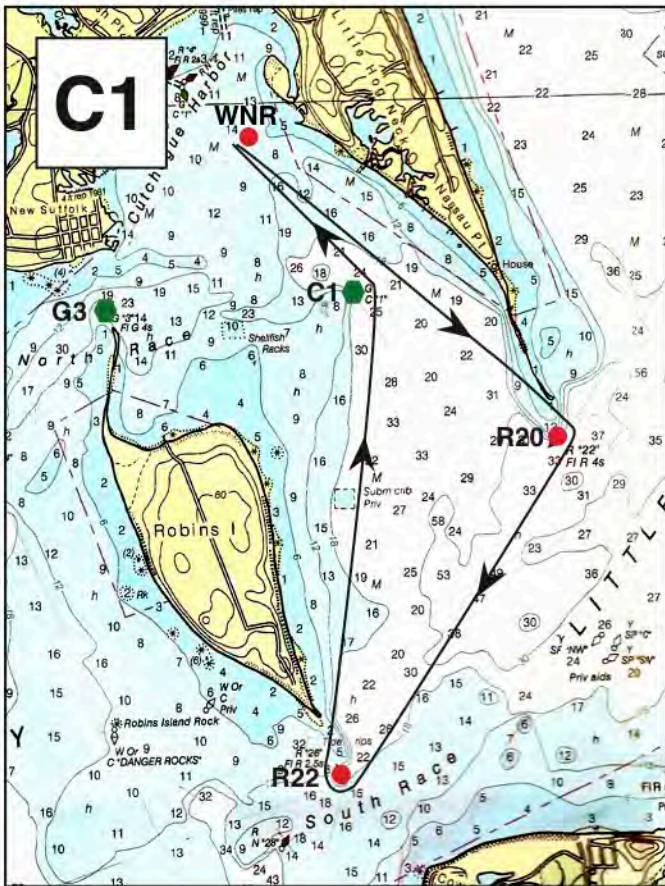


B4. START AT WNR, G3-P, C1-P, G3-S,
C1-P, G3-S, FINISH WNR – 5.90 NM

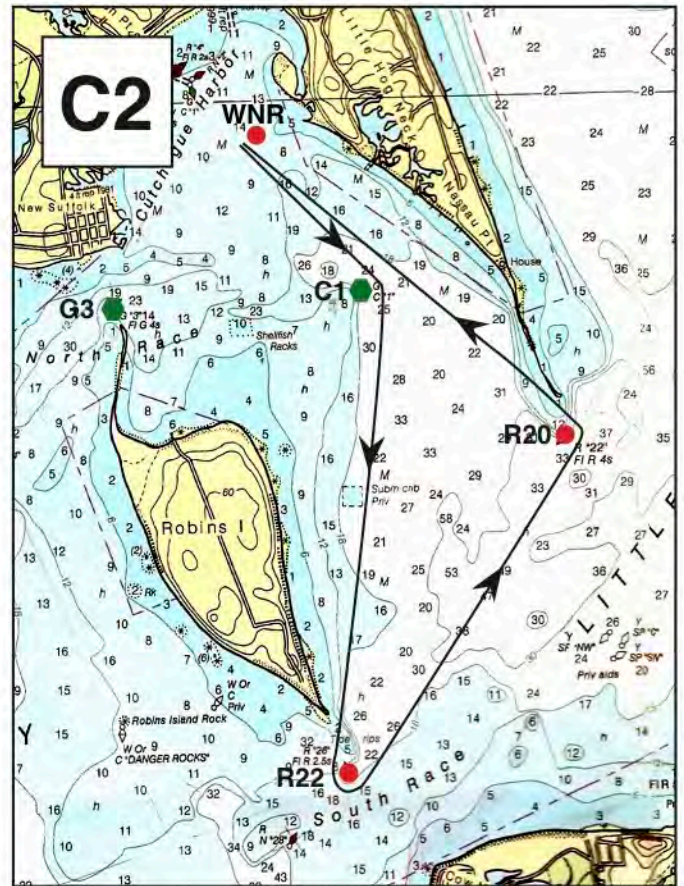
Short courses for light wind (esp. East-West); starts to the SW.

PECONIC BAY SAILING ASSOCIATION RACE-COURSES – C1 & C2

PLEASE MONITOR VHF #71 – DO NOT USE FOR NAVIGATION



C1. START AT WNR, R20-S, R22-S,
C1-P FINISH WNR — 6.53 NM



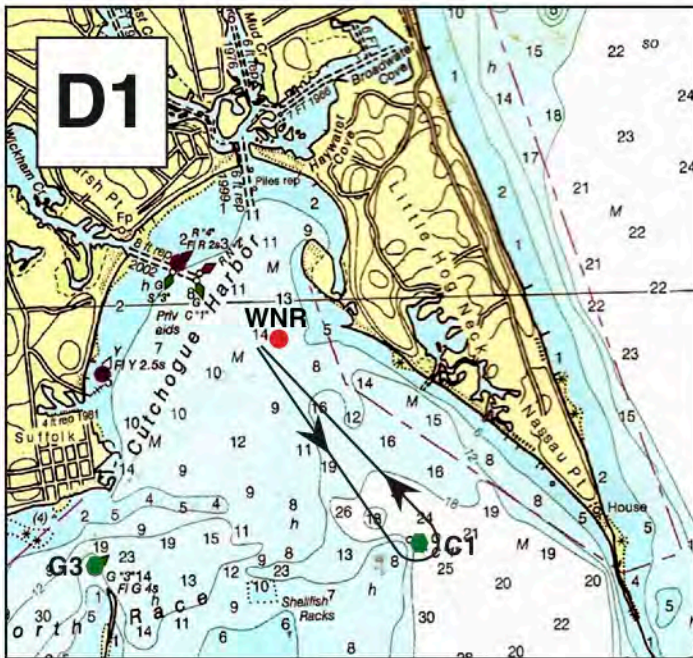
C2. START AT WNR, C1-S, R22-P,
R20-P, FINISH WNR — 6.53 NM

Nassau Point & South Race, clockwise or counter-clockwise.

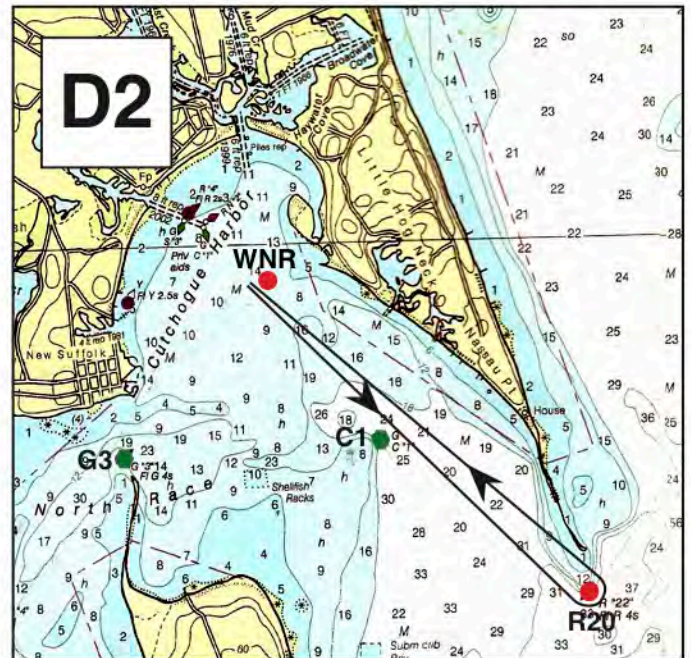
PECONIC BAY SAILING ASSOCIATION

RACE-COURSES – D1, D2, D3 & D4

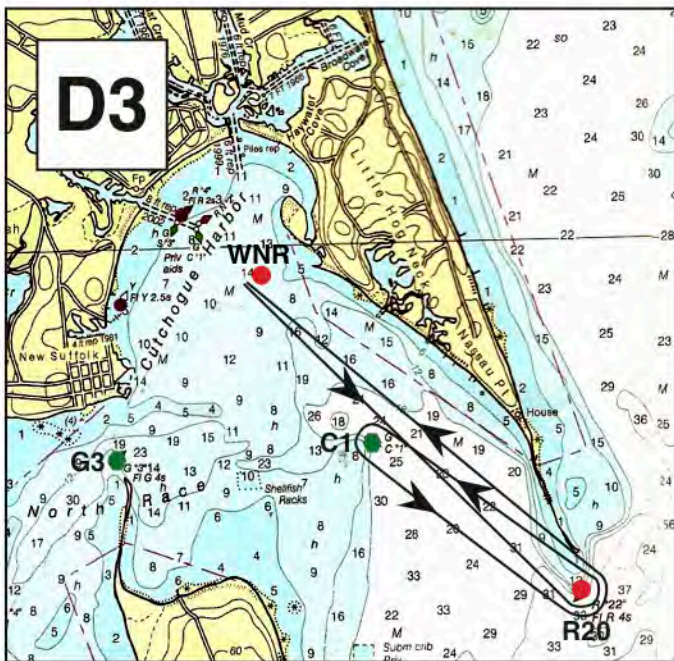
PLEASE MONITOR VHF #71 – DO NOT USE FOR NAVIGATION



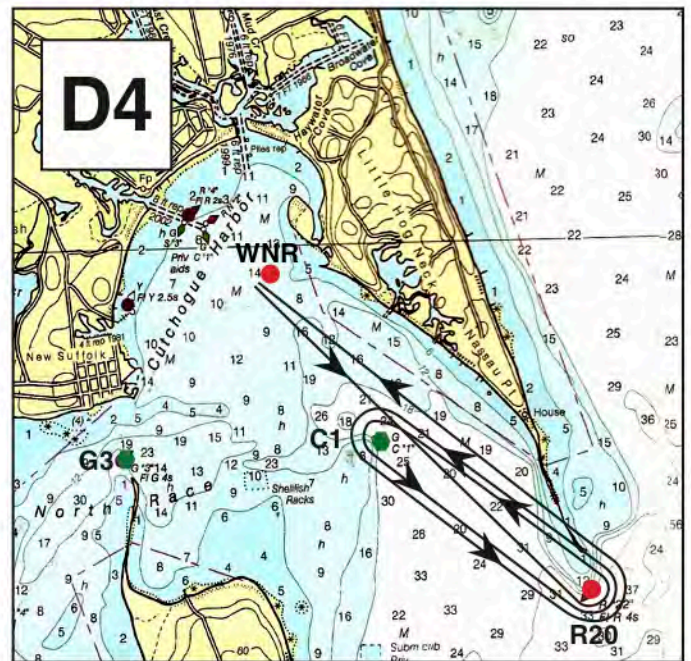
D1. START AT WNR, C1-P,
FINISH WNR – 1.90 NM



D2. START AT WNR, R20-P,
FINISH WNR – 3.84 NM



D3. START AT WNR, R20-P, C1-P,
R20-P, FINISH WNR – 6.00 NM

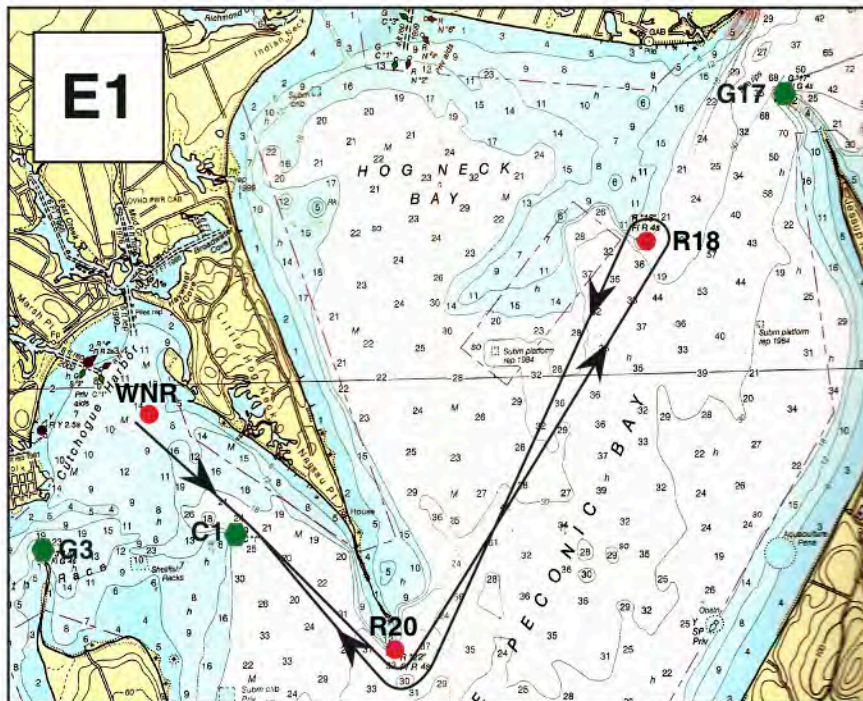


D4. START AT WNR, R20-P, C1-P,
R20-P, C1-P, R20-P,
FINISH WNR – 8.16 NM

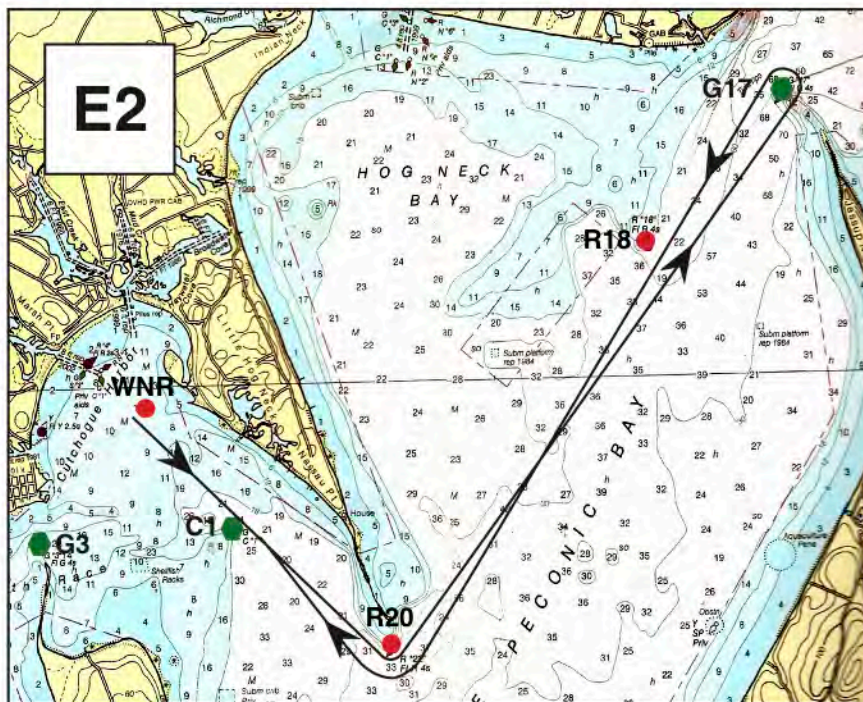
Variations on windward-leeward courses to C1/R20 for light-moderate SE (or NW) winds.

PECONIC BAY SAILING ASSOCIATION RACE-COURSES – E1 & E2

PLEASE MONITOR VHF #71 – DO NOT USE FOR NAVIGATION



E1. START AT WNR, R20-P, R18-P, R20-S, FINISH WNR – 8.98 NM

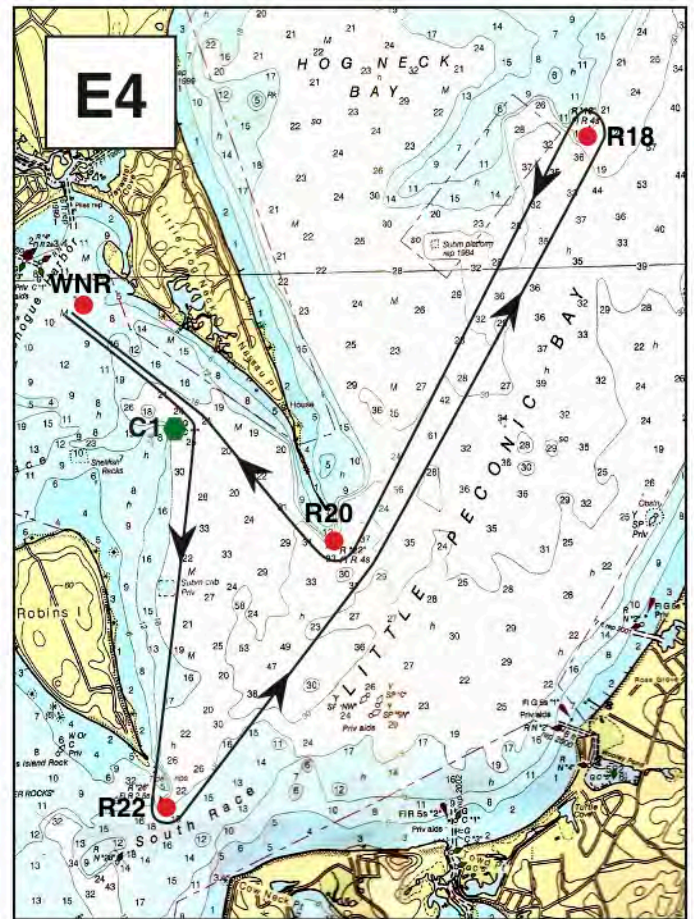
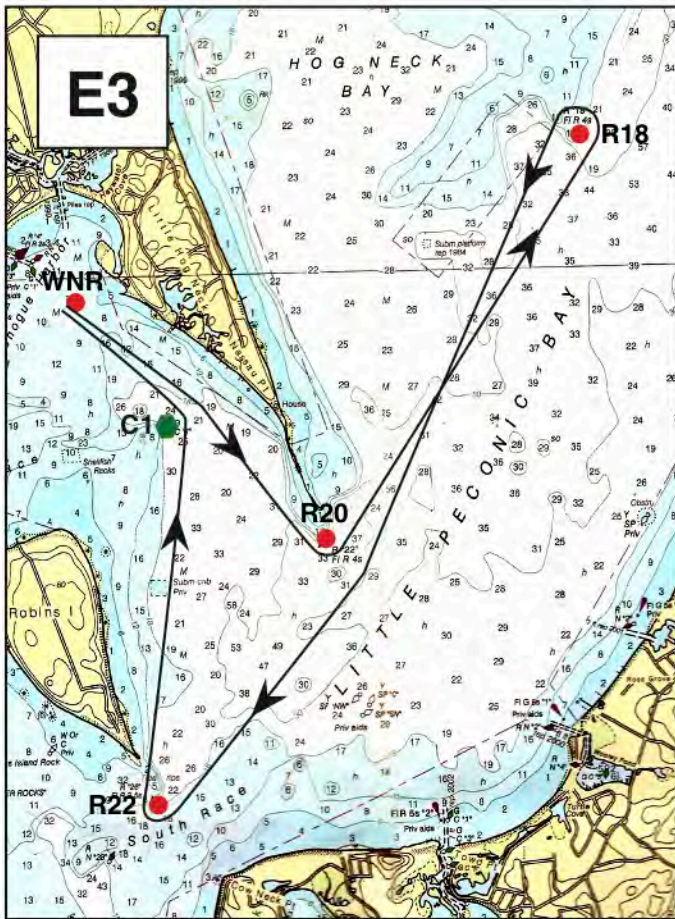


E2. START AT WNR, R20-P, G17-P, R20-S, FINISH WNR – 11.14 NM

Variations on R18/G17 (Jessups) for moderate or stronger NE (or SW) winds.

PECONIC BAY SAILING ASSOCIATION RACE-COURSES — E3 & E4

PLEASE MONITOR VHF #71 — DO NOT USE FOR NAVIGATION



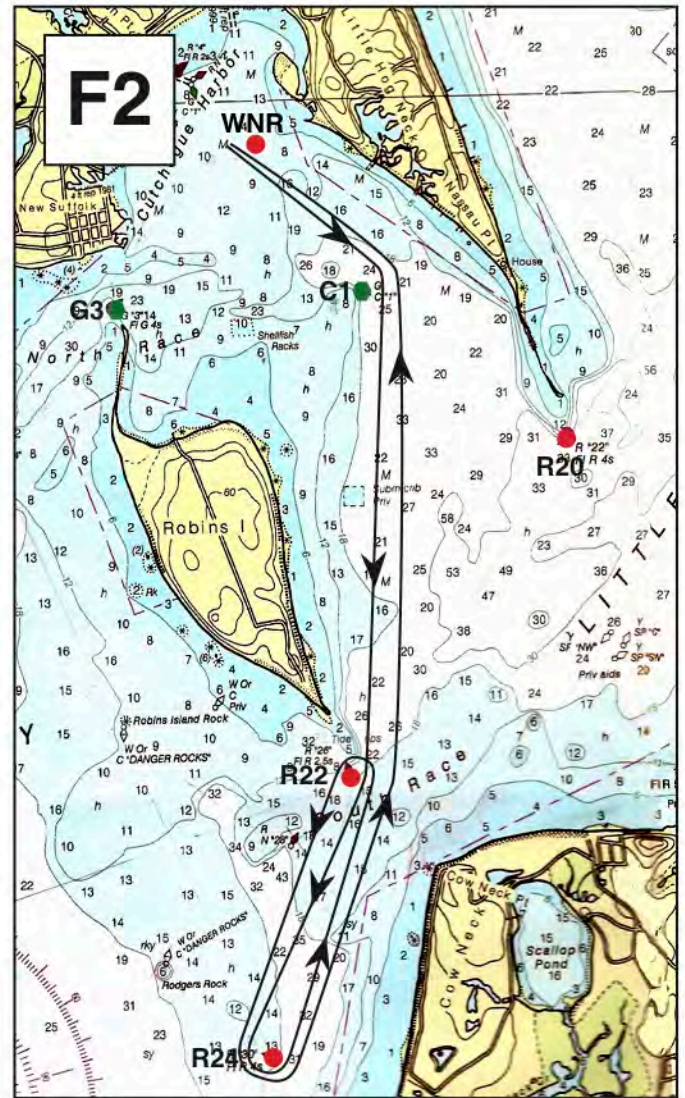
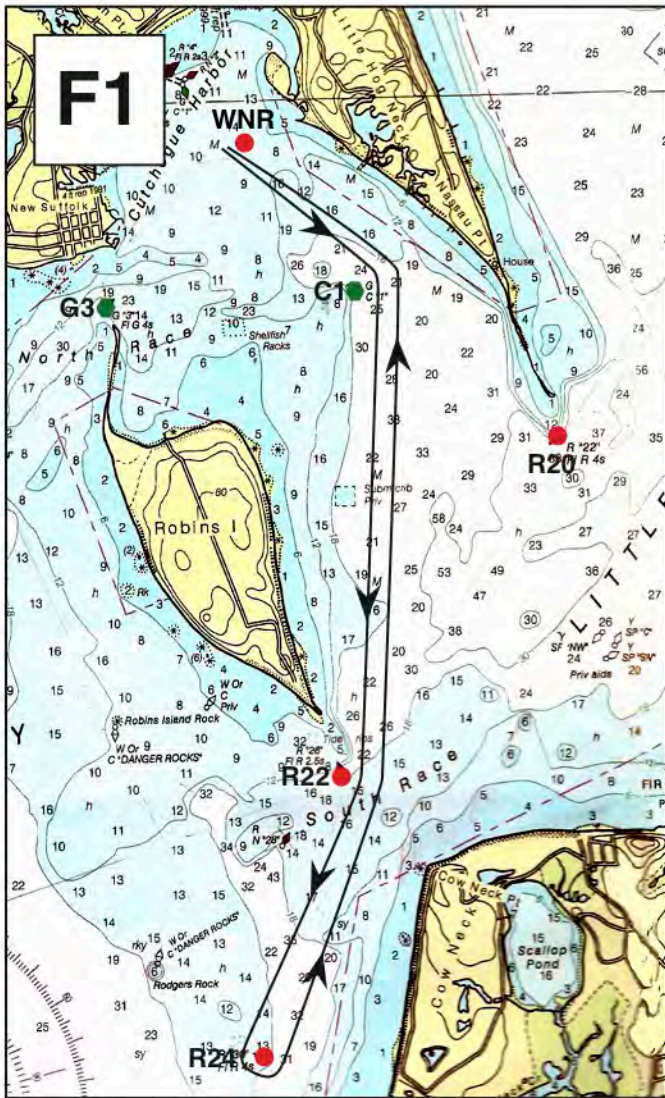
*E3. START AT WNR, R20-P,
R18-P, R22-S, C1-P,
FINISH WNR — 11.67 NM*

*E4. START AT WNR, C1-S,
R22-P, G18-P, R20-S,
FINISH WNR — 11.67 NM*

Variations on R18/G17 (Jessups) for moderate or stronger NE (or SW) winds.

PECONIC BAY SAILING ASSOCIATION RACE-COURSES – F1 & F2

PLEASE MONITOR VHF #71 – DO NOT USE FOR NAVIGATION



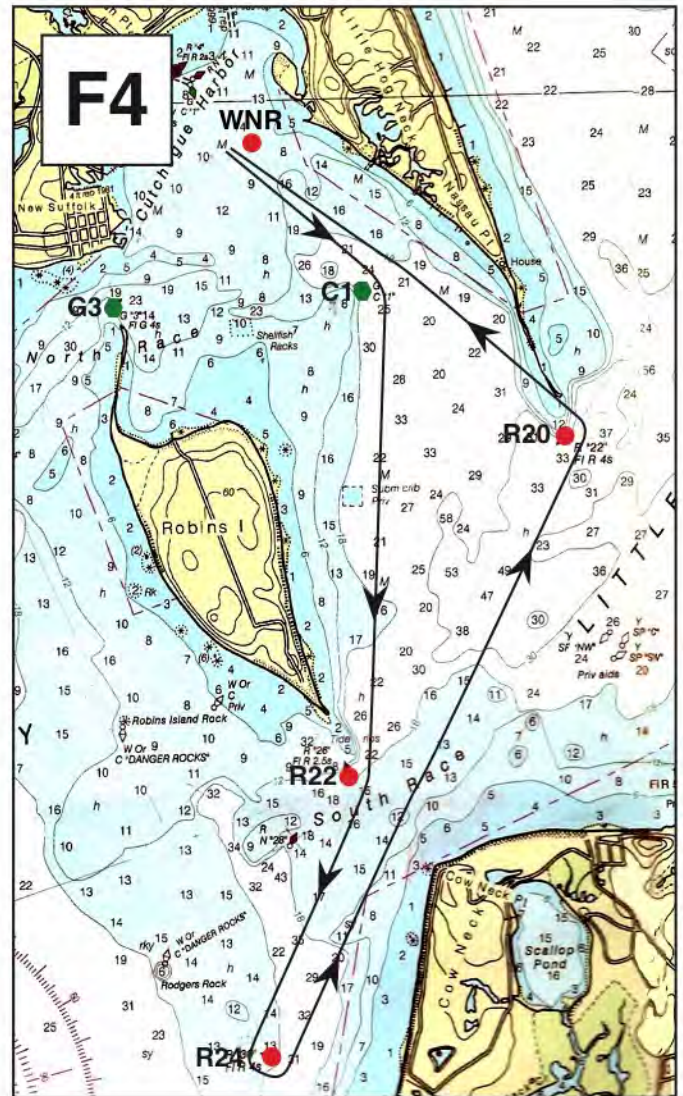
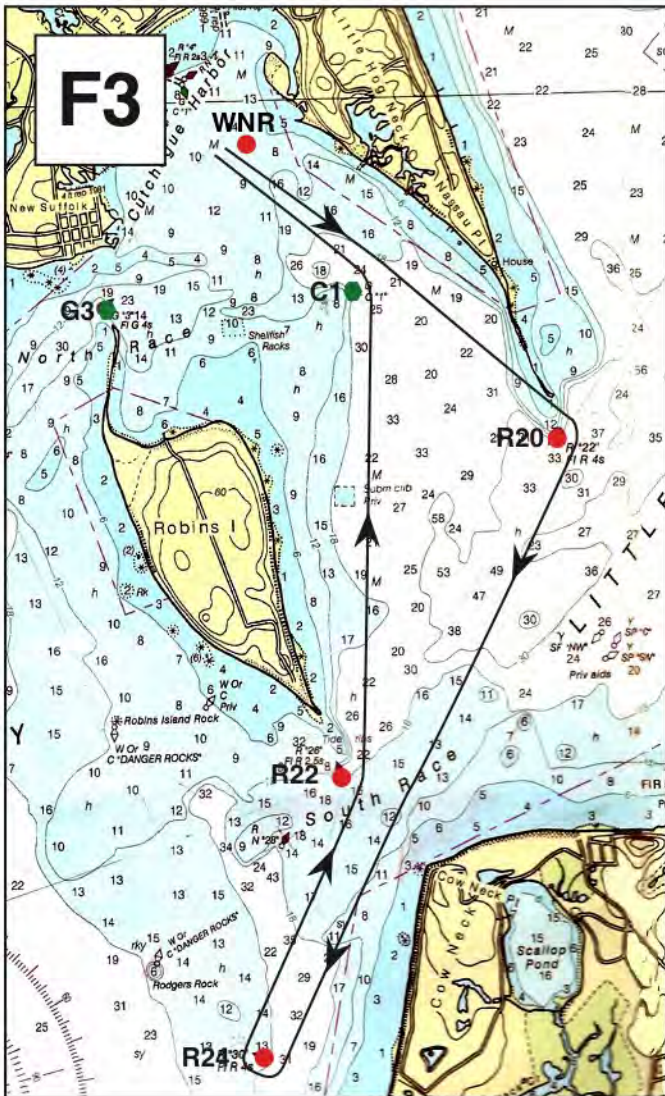
F1. START AT WNR, C1-S, R22-S,
R24-P, R22-P, C1-P,
FINISH WNR – 8.28 NM

F2. START AT WNR, C1-S, R22-S,
R24-P, R22-P, R24-P, R22-P, C1-P
FINISH WNR – 10.76 NM

Windmill/Windmill + for moderate to strong SSW winds; some W. Nassau Pt.

PECONIC BAY SAILING ASSOCIATION RACE-COURSES – F3 & F4

PLEASE MONITOR VHF #71 – DO NOT USE FOR NAVIGATION

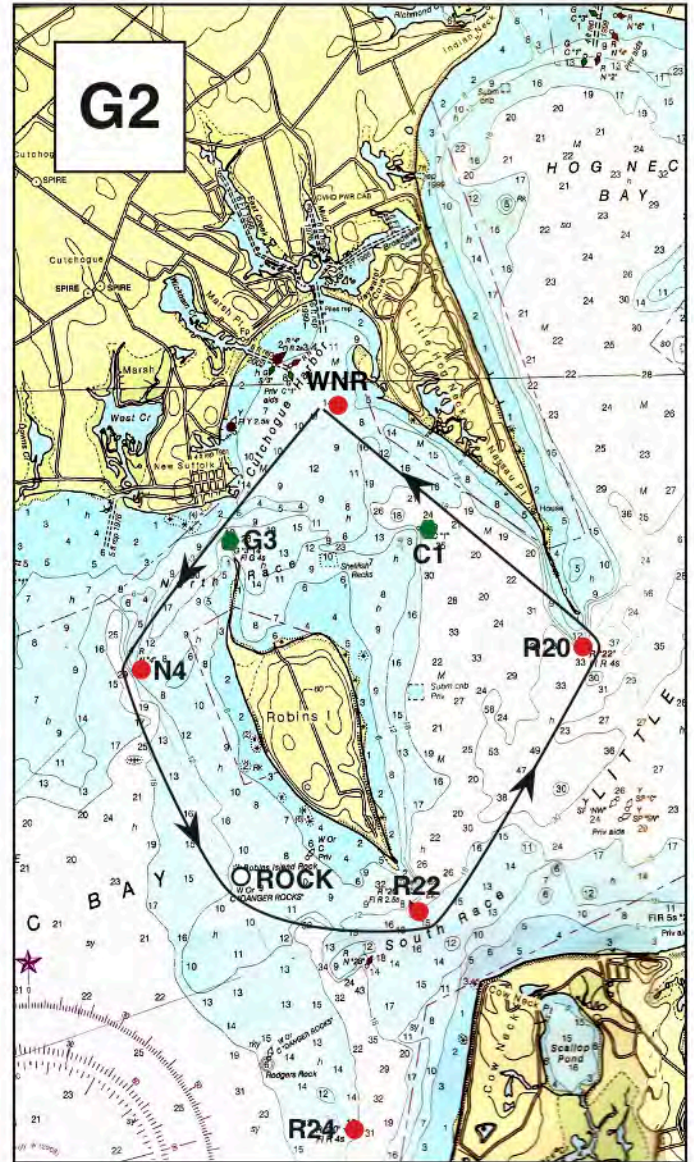
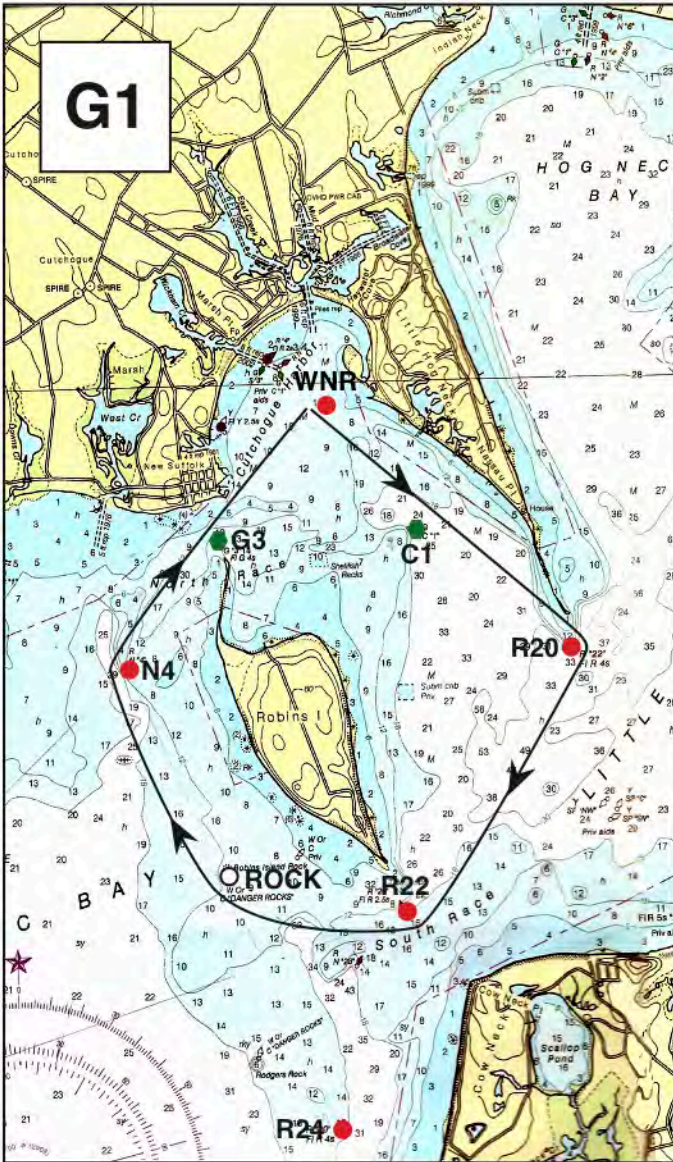


*F3. START AT WNR, R20-S,
R24-S, R22-P, C1-P,
FINISH WNR – 8.98 NM*

*F4. START AT WNR, C1-S, R22-S,
R24-P, R20-P,
FINISH WNR – 8.98 NM*

Windmill/Windmill + for moderate to strong SSW winds; some W. Nassau Pt.

PECONIC BAY SAILING ASSOCIATION
RACE-COURSES – G1 & G2
 PLEASE MONITOR VHF #71 – DO NOT USE FOR NAVIGATION



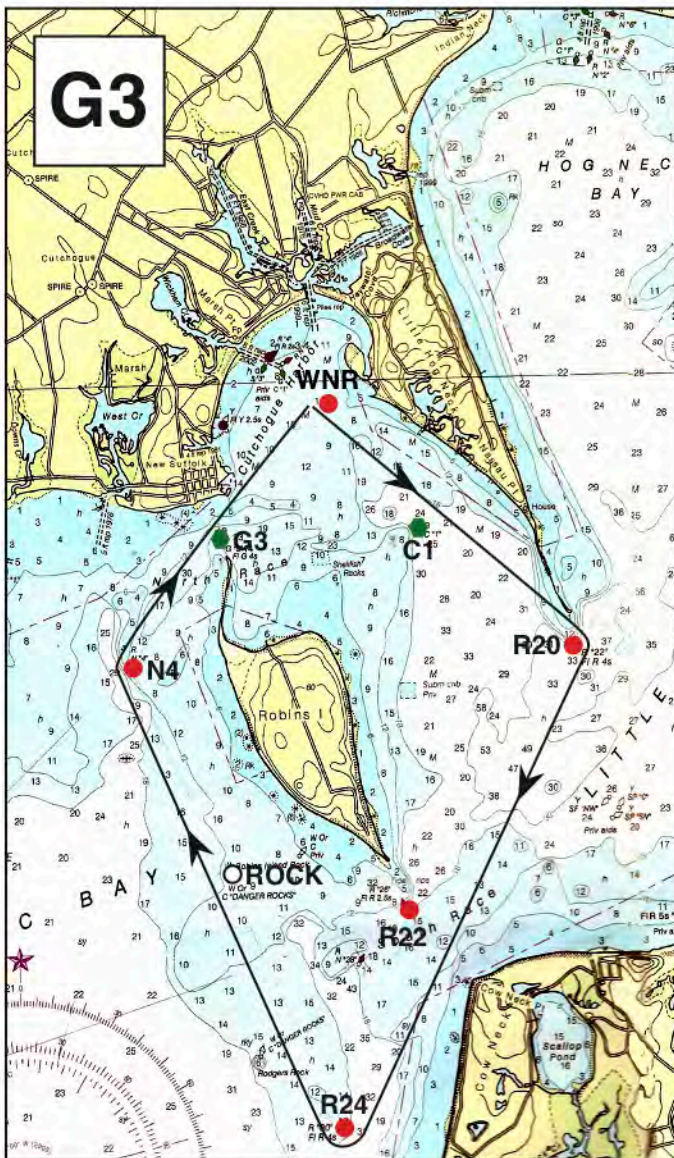
G1. START AT WNR, R20-S, R22-S,
 ROCK-S, N4-S, G3-S,
 FINISH WNR – 7.51 NM

G2. START AT WNR, G3-P, N4-P,
 ROCK-P, R22-P, R20-P,
 FINISH WNR – 7.51 NM

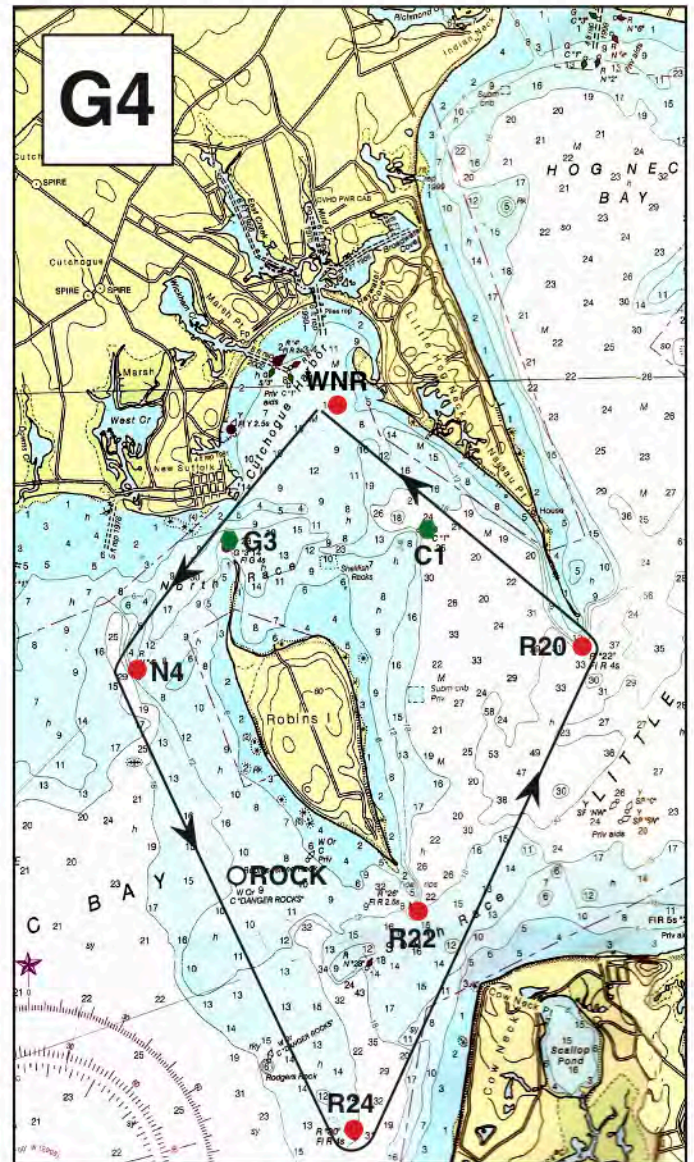
Variations on a “Wednesday Night Race” for moderate to stronger breezes.

PECONIC BAY SAILING ASSOCIATION RACE-COURSES – G3 & G4

PLEASE MONITOR VHF #71 – DO NOT USE FOR NAVIGATION



G3. START AT WNR, R20-S, R22-S,
R24-S, N4-S, G3-S,
FINISH WNR – 9.30 NM

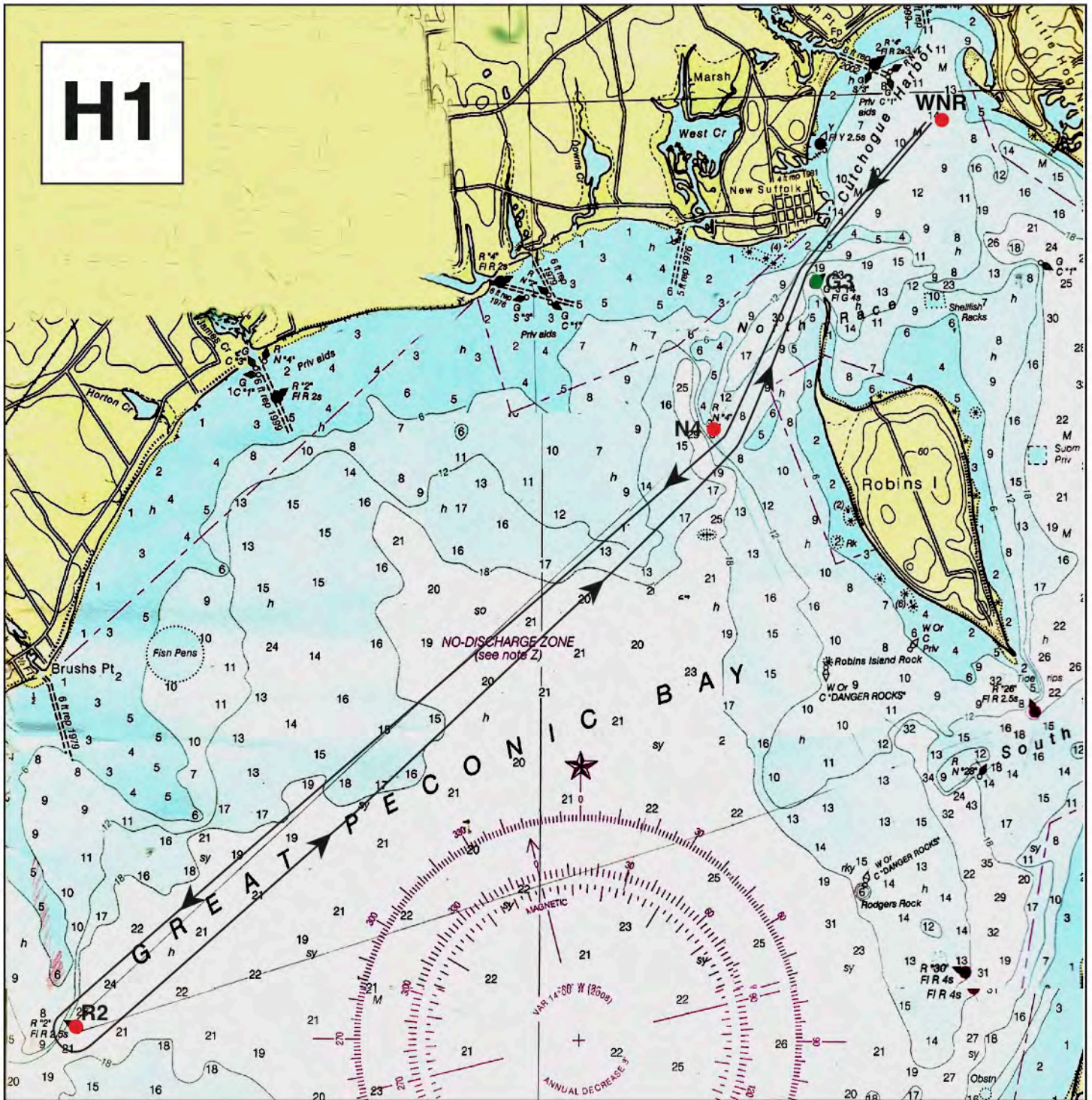


G4. START AT WNR, G3-P, N4-P,
R24-P, R22-P, R20-P,
FINISH WNR – 9.30 NM

Variations on a "Wednesday Night Race" for moderate to stronger breezes.

PECONIC BAY SAILING ASSOCIATION RACE-COURSE – H1

PLEASE MONITOR VHF #71 – DO NOT USE FOR NAVIGATION



H1. START AT WNR, G3-P, N4-S, R2-P, N4-P, G3-S, FINISH WNR – 11.26 NM

Jamesport & back.